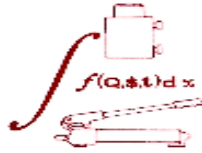


RICHARD DUDGEON, INC.

1565 Railroad Ave.
Bridgeport, CT 06605
WWW.DUDGEONJACKS.COM
APPLICATIONS@DUDGEONJACKS.COM



Tel: 1-203-336-4459
Fax: 1-203-333-8417
Toll Free: 1-888-DUDGEON

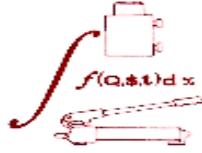
Equipment Inventory

Solid Jacks (Single-Acting)

Item #	Capacity (tons)	Stroke (in.)	Area (sq. in.)	Pressure (psi)	Height (in.)	O.D. (in.)	Rod Dia. (in.)	Oil Cap. (cu. in.)	Weight (lbs.)
J50S	5	0.56	0.994	10,061	1.625	1.65 x 2.56	0.625	0.62	2.2
J53S	5	3.25	0.994	10,061	6.5	1.5	1	3.2	3.26
J55S	5	5.25	0.994	10,061	8.5	1.5	1	5.2	4
J100S	10	0.44	2.24	8,943	1.75	2.19 x 3.25	0.75	1	3.3
J101S	10	1	2.236	8,948	3.63	2.25	1.5	2.2	4
J102S	10	2.125	2.236	8,948	4.75	2.25	1.5	4.8	5
J106S	10	6.125	2.24	8,948	9.75	2.25	1.5	13.7	10
J1010S	10	10.125	2.236	8,948	13.75	2.25	1.5	22.6	13
J1014S	10	14.125	2.24	8,948	17.75	2.25	1.5	31.6	16.2
J200S	20	0.44	4.43	9,029	2	3 x 4	1.125	2	5.6
J202S	20	1.75	4.43	9,029	3.75	3.56	2.16	7.7	9.9
J254S	25	4	5.15	9,699	8.5	3.375	2.25	20.6	17.6
J256S	25	6.25	5.15	9,699	10.75	3.375	2.25	32.2	21.7
J2512S	25	12.25	5.15	9,699	16.75	3.375	2.25	63.2	33.1
J2514S	25	14.3	5.15	9,699	18.75	3.39	2.25	73.4	40
J300S	30	0.5	6.492	9,242	2.31	3.75 x 4.5	1.38	3.2	8.6
J302S	30	2.44	6.49	9,243	4.625	4	2.5	15.8	14.7
J500S	50	0.625	9.62	10,394	2.625	4.5 x 5.5	1.75	6	14
J502S	50	2.375	9.62	10,393	5	4.88	3.125	22.8	23.2
J506S	50	6.3	11.04	9,058	11.13	5	3.13	69	56
J55.75MP	55	0.75	10.6	10,375	1.5	4 x 7.85	0.75	8	7.3
J554S	55	4.25	11.04	9,959	9.125	5	3.125	46.9	41.3
J556S	55	6.25	11.04	9,959	11.125	5	3.125	69	51
J5513S	55	13.25	11.04	9,959	18.125	5	3.125	146.3	78
J6012S	60	12	20.63	5,817	20.5	7	5.13	254	222
J750S	75	0.625	15.9	9,431	3.125	5.53 x 6.5	2.125	9.9	23.3
J756S	75	6.125	15.9	9,434	12.375	5.75	3.75	97.4	73.5
J1000S	100	0.625	19.635	10,183	3.38	7 x 6	2.5	12.3	30
J1002S	100	2.25	19.63	10,186	5.5	6.625	4.375	44.2	47.3
J1006S	100	6.625	20.62	9,695	13.25	6.25	4.125	137	91
J1009S	100	9	41.1	4,866	15.19	12 x 12	7.23	369.6	475
J10012S	100	12	33.18	6,028	21	9	6.5	416	400
J1251S	125	1	15.9	15,723	2	6 x 8	4.5	15.9	22
J1500S	150	0.5625	30.68	9,778	4.56	7.5 x 8.5	3.0	17.2	52
J1502S	150	2	30.68	9,778	6.38	8.06	6.25	61.4	92
J15012S	150	12	50.27	5,968	22	11	8	603	582
J2503S	250	3	50.22	9,956	11.875	9.875	5.5	150.6	220
J2802S	280	2	56.74	9,870	7.5	10.88	8.5	113.5	201
J30012S	300	12	78.54	7,639	24	15	10	920	1175
J3556S	355	6	70.88	10,017	13.13	11.75	9.5	425.3	434
J35510S	355	10	70.88	10,017	17.13	11.75	9.5	708.8	565

RICHARD DUDGEON, INC.

1565 Railroad Ave.
Bridgeport, CT 06605
WWW.DUDGEONJACKS.COM
APPLICATIONS@DUDGEONJACKS.COM



Tel: 1-203-336-4459
Fax: 1-203-333-8417
Toll Free: 1-888-DUDGEON

Equipment Inventory

Solid Jacks (Single-Acting) continued

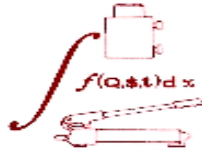
Item #	Capacity (tons)	Stroke (in.)	Area (sq. in.)	Pressure (psi)	Height (in.)	O.D. (in.)	Rod Dia. (in.)	Oil Cap. (cu.in.)	Weight (lbs.)
J4001S	400	1.25	51.85	15,429	3.13	10	8.13	65	70
J4302S	430	2	86.59	9,932	10.38	13	10.5	173.2	440
J4306S	430	6	86.59	9,932	14.38	13	10.5	519.5	609
J43010S	430	10	86.59	9,932	18.38	13	10.5	865.9	778
J5001S	500	1	122.41	8,169	5.875	20 x 20	12.48	138.6	400
J5008S	500	8	122.41	8,169	21.25	20 x 20	12.48	993.3	1250
J53012S	530	12	178.48	5,940	25.5	20.5	15.39	2148	2330
J5653S	565	3.1	113.1	9,991	11.75	15	122	353	600
J7000S	700	0.5	113	12,389	3	14	12	57	92.4
J7001S	700	1.5	113	12,389	4.13	16	12	169.5	174
J80012S	800	12	201.06	7,958	27.5	21 x 21	16	2402.4	2600
J80018S	800	18	201.06	7,958	36.5	24 x 24	16	3627	5000
J10002S	1000	2	201.06	9,947	6.63	20	16	402	588
J100010S	1000	10	201.06	9,947	36.5	24 x 24	16	2412	5000
J125020S	1250	20	314.16	7,958	42	30 x 30	20	6283.2	7200

Solid Jacks (Double-Acting)

Ltem #	Capacity (tons)	Stroke (in.)	Area (sq.in.)	Pressure (psi)	Height (in.)	O.D. (in.)	Rod Dia. (in.)	Oil Cap. (cu. in.)	Weight (lbs.)
J1515D	15	15	3.14	9,554	22	3.5 x 3.5	1.38	23	35
J5024D	50	24	11	9,091	36	5.81 x 5.81	2	77	125
J7515D	75	15	19.64	7,660	23.5	6.5	4	189	220
J7524D	75	24	15.9	9,434	38	6.75 x 6.75	2.5	118	200
J1006D	100	6	20.63	9,695	15.75	6.18	4	76	124
J10010D	100	10	21.65	9,238	17.88	7	4	126	170
J1256D	125	6.5	23.76	10,522	13.38	7	4	82	125
J1506D	150	6.63	30.68	9,779	14.88	8.25	4.5	105.4	188
J15012D	150	12	35.78	8,385	21.25	7.88	5.5	285	250
J15013D	150	13.13	30.68	9,779	21.38	8.25	4.5	209	259
J2002D	200	2.13	50.27	7,957	9.13	10	6	60	180
J2005D	200	5.25	50.26	7,959	17.5	10	6.5	174	350
J2006D	200	6	50.27	7,957	17.5	10	6.5	200	370
J20012D	200	12	50.27	7,957	24.25	10	6.5	432	495
J20013D	200	13	50.26	7,959	25.25	10	6.5	432	495
J3002D	300	2.25	47.17	12,720	8.94	9.5	5.88	60	167
J4006D	400	6	95	8,421	16.13	13.75	9	382	625
J40013D	400	13	95	8,421	26.28	12.63	7.25	770	625
J5006D	500	6.5	132.73	7,534	17.5	15.88	10	511	870
J50012D1	500	12	132.73	7,534	25.88	15.88	10	943	1200
J50012D2	500	12	132.73	7,534	29	15.88	10	942	1450
J60012D	600	12	132.73	7,534	25.88	15.88	10	943	1200
J6002D	600	2.25	95.33	12,627	11.75	13.75	8.5	214.5	480
J60024D	600	24	153.94	7,795	40	17.13	10	1885	2000
J7002D	700	2.25	113.1	12,378	14	15	9.75	168	670

RICHARD DUDGEON, INC.

1565 Railroad Ave.
Bridgeport, CT 06605
WWW.DUDGEONJACKS.COM
APPLICATIONS@DUDGEONJACKS.COM



Tel: 1-203-336-4459
Fax: 1-203-333-8417
Toll Free: 1-888-DUDGEON

Equipment Inventory

Locknut Jacks (Single-Acting)

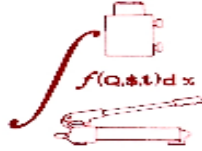
Item #	Capacity (tons)	Stroke (in.)	Area (sq. in.)	Pressure (psi)	Height (in.)	O.D. (in.)	Rod Dia. (in.)	Oil Cap. (cu. in.)	Weight (lbs.)
J553LS	55	3.12	11.04	9,960	9.5	5	3.75	34	32
J552LSO	55	2	11.04	9,964	6.5	5	3.75	22	35
J552L	55	2	11.04	9,964	6.38	4.94	3.75	22.1	33.7
J556L	55	6	11.04	9,964	10.38	4.94	3.75	66.3	58
J556LA	55	6.13	11.04	9,960	12.5	5.25	3.75	68	29.6
J1002L	100	2.5	34.39	5,816	13	9	6.63	138	220
J1002LSO	100	2	20.68	10,000	7.5	6.5	5.12	40.5	70
J1006L	100	6.25	20.63	9,695	11.25	6.25	5.13	129	106
J1004L	100	4	33.18	6,028	12	9	6.5	133	215
J1083LS	108	3	21.65	9,977	12.5	7.38	5.25	65	151
J1502L	150	2	30.68	9,778	8.13	8.06	6.25	61.4	117
J1506L	150	6	30.68	9,778	12.13	8.06	6.25	184.1	177
J1502LSO	150	2	30.68	10,000	8.25	8	6.25	60.6	115
J1701LS	170	1	33.18	10,246	7.75	8	6.5	33	150
J2006L	200	6	41.28	9,690	13.5	9.25	7.25	247.7	259
J2802L	280	2	56.74	9,870	9.75	10.88	8.5	113.5	261
J2806L	280	6	56.74	9,870	13.75	10.88	8.5	340.4	359
J4001LS	400	1.25	51.85	15,414	6.75	10	8.13	64.8	147
J4302L	430	2	86.59	9,932	13.13	13	10.5	173.2	556
J4306L	430	6	86.59	9,932	17.13	13	10.5	519.5	725
J3002LS	300	2	50.26	11,938	11.75	10	8	101	265
J3003LS	300	3	50.26	11,938	14	10	8	151	316
J5656L	565	6	113.1	9,991	22.63	14.88	12	679	1031

Low Profile Pancake Jacks (Single-Acting)

Item #	Capacity (tons)	Stroke (in.)	Area (sq. in.)	Pressure (psi)	Height (in.)	O.D. (in.)	Rod Dia. (in.)	Oil Cap. (cu. in.)	Weight (lbs.)
J50S	5	0.56	0.99	10,061	1.65	1.65 x 2.56	0.65	1	2
J100S	10	0.4	2.24	8,943	1.75	2.19 x 3.25	1.77	1	3.2
J200S	20	0.44	4.43	9,029	2	3 x 4	1.13	2	5.6
J300S	30	0.5	6.49	9,242	2.31	3.75 x 4.5	1.38	3.2	8.6
J500S	50	0.63	9.62	10,395	2.63	5.5 x 4.5	1.75	6	14
J55.75MP	55	0.75	10.6	10,375	1.5	4 x 7.85	0.75	8	7.3
J750S	75	0.6	15.9	9,431	3.13	5.53 x 6.5	2.13	10	25
J1000S	100	0.6	19.64	10,183	3.38	7 x 6	4.38	12	30
J1251S	125	1	15.9	15,723	2	6 x 8	4.5	15.9	22
J1500S	150	0.6	30.66	9,785	3.94	8.5 x 7.5	4.5	17	50
J4001S	400	1.25	51.85	15,429	3.13	10	8.13	65	70
J5001S	500	1	122.41	8,169	5.875	20 x 20	12.48	138.6	400
J7000S	700	0.5	113	12,389	3	14	12	57	92.4
J7001S	700	1.5	113	12,389	4.13	16	12	169.5	174
J10002S	1000	2	201.06	9,947	6.63	20	16	402	588
J1701LS	170	1	33.18	10,246	7.75	8	6.5	33	150
J4001LS	400	1.25	51.85	15,414	6.75	10	8.13	64.8	147

RICHARD DUDGEON, INC.

1565 Railroad Ave.
 Bridgeport, CT 06605
WWW.DUDGEONJACKS.COM
APPLICATIONS@DUDGEONJACKS.COM



Tel: 1-203-336-4459
 Fax: 1-203-333-8417
 Toll Free: 1-888-DUDGEON

Equipment Inventory

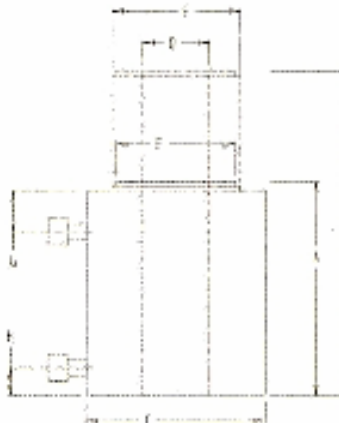
Center Hole Jacks (Single-Acting)

Item #	Capacity (tons)	Stroke (in.)	Effective Area (sq. in.)	Pressure (psi)	Height		C.H. Dia.		Rod Dia. (in.)	Oil Cap. (cu. in.)	Weight (lbs.)
					A (in.)	C (in.)	D (in.)	E (in.)			
J102SC	10	2.5	2.21	9,054	5.31	3	0.76	2.06	5.52	9	
J202SC	20	2	4.72	8,692	6.125	3.88	1.08	2.375	9.45	16.1	
JSH202	20	2.5	4.73	8,457	6.31	3.88	1.06	2	10	15	
J203SC	20	3	3.92	10,186	6.06	4	1.05	2.75	11.76	20	
RSH302	30	2	7.22	8,310	7	4.5	1.31	2.5	18	24	
J302SC	30	2	7.22	8,310	7	4.5	1.31	2.5	18	24	
J603SC	60	3	12.31	9,750	9.25	6.25	2.13	3.59	37	60	
J606SC	60	6	12.31	9,750	12.25	6.25	2.13	3.59	74	78	
J1003SC	100	3	20.62	9,700	10	8.38	3.13	5	61.8	115	

Center Hole Jacks (Double-Acting)

Item #	Capacity (tons)	Stroke (in.)	Effective Area (sq. in.)	Pressure (psi)	Height		O.D. C.H. Dia.		Rod Dia. (in.)	Oil Cap. (cu.in.)	Weight (lbs.)
					A (in.)	C (in.)	D (in.)	E (in.)			
J106DC	10	6.13	2.8	7,143	10.5	3.75	1.38	2.5	11	25	
J506DC	50	6	14.73	6,789	11	6.5	2.13	4	46	80	
J1001DC	100	1.5	21.4	9,350	6.5	8.375	3.14	5	32.1	85	
J1006DC	100	6	22.38	8,937	13	7.75	2.13	5	68	150	
J1502DC	150	2.13	45.68	6,567	11	9.88	3.31	7.75	97	205	
J1506DC2	150	6	42.56	7,049	15	10.5	3.25	6.75	146	365	
J1506DC1	150	6	30.24	9,921	10.88	8.5	3.13	7.25	90	94	
J1508DC	150	2.13	30.24	9,921	13.25	8.5	3.13	7.25	120	104	
J1508DC2	150	8	29.85	10,050	13.13	8	2.25	5.25	126	100	
J2008DC	200	8	40.45	9,888	16.06	10.75	4.06	7.5	324	311	

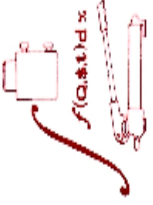
Diagram: Center Hole Jacks (Double-Acting)



RICHARD DUDGEON, INC.

1565 Railroad Ave.
 Bridgeport, CT 06605
WWW.DUDGEONJACKS.COM
APPLICATIONS@DUDGEONJACKS.COM

Tel: 1-203-336-4459
 Fax: 1-203-333-8417
 Toll Free: 1-888-DUDGEON



Equipment Inventory

Lightweight Center Hole Jacks (Double-Acting)

Item #	Capacity Stroke (tons)	Effective Area Extended (sq. in.)	Effective Area Retracted (sq. in.)	Collapsed Height		Extended Height		O. D. (in.)	Center Hole Dia. (in.)	Rod Load			Top to QDC (in.)	Oil Cap. (in.)	Fluid Vol. (cu. in.)	Weight (lbs.)
				A (in.)	B (in.)	C (in.)	D (in.)			E (in.)	F (in.)	G (in.)				
RDH603A-2.13	60	12.75	5.33	7.475	10.475	6.25	2.13	4.125	2.13	4.125	3.73	1.7	1.15	38.25	40	
RDH606A-2.13	60	12.75	5.33	10.475	16.475	6.25	2.13	4.125	2.13	4.125	3.73	1.7	1.15	76.5	57	
RDH6010A-2.13	60	12.75	5.33	14.6	24.725	6.25	2.13	4.125	2.13	4.125	3.73	1.7	1.15	129.1	79	
RDH1003A-2.13	100	20.04	9.18	7.9	10.9	7.25	2.13	4.62	2.13	4.62	4.3	2.1	1.25	60.1	60	
RDH1006A-2.13	100	20.04	9.18	11.0	17.0	7.25	2.13	4.62	2.13	4.62	4.3	2.1	1.25	120.2	78	
RDH1258A-3.13	125	24.76	12.04	13.5	21.5	8.37	3.13	5.5	3.13	5.5	5.2	2.1	1.5	198.1	117	
RDH1506A-3.13	150	30.34	15.33	11.5	17.5	8.62	3.13	5.75	3.13	5.75	5.5	2.13	1.5	181.4	105	
RDH1508A-3.13	150	30.34	15.33	13.5	21.5	8.62	3.13	5.75	3.13	5.75	5.5	2.13	1.5	241.9	124	
RDH1506A-3.5	150	30.01	13.51	12.0	18.0	9.37	3.5	6.25	3.5	6.25	5.8	2.5	1.5	180.1	125	
RDH1508A-3.5	150	30.01	13.51	14.0	22.0	9.37	3.5	6.25	3.5	6.25	5.8	2.5	1.5	240.1	162	
RDH1758A-3.75	175	37.55	17.67	14.25	22.25	9.87	3.75	6.75	3.75	6.75	6.4	2.25	1.75	300.6	167	
RDH2008A-4.1	200	42.01	17.45	14.6	22.6	10.75	4.1	7.5	4.1	7.5	6.4	2.25	2.0	336.1	198	
RDH3008A-5.1	300	64.41	31.48	17.75	25.75	13.5	5.1	9.0	5.1	9.0	6.47	3.75	3.0	515.28	405	

See Diagram on previous page.

Our Lightweight Center Hole Jacks feature:

- Ability to withstand full dead end load
- Cylinders constructed from heat treated alloy steel
- Pistons made from hard-coated high strength aluminum alloy
- Hard chrome-plated center tube
- Standard interchangeable hardened load caps